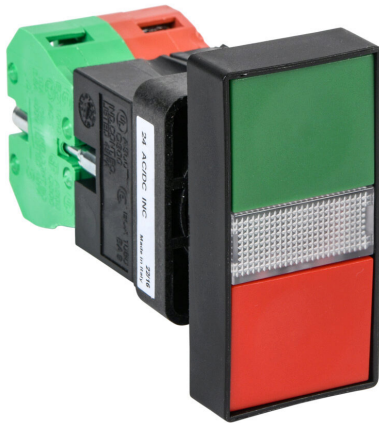


# GCX3151-24 Cut Sheet



AutomationDirect pushbutton, IP40, 22mm, momentary, incandescent illuminated, (1) N.O./ (1) N.C. contact(s), plastic base, plastic bezel, Operator: red/green, double headed, 60mm, rectangular, plastic, 24 VAC/VDC, full voltage.

For complete product information, please see this item on our store at the following link:



<https://www.automationdirect.com/pn/GCX3151-24>

## Technical Specifications

<b>Brand</b>	AutomationDirect
<b>Item</b>	Pushbutton
<b>IP Rating</b>	IP40
<b>Barrel Size</b>	22mm
<b>Action</b>	Momentary
<b>Bulb Type</b>	Incandescent illuminated
<b>Contact Type</b>	(1) N.O./ (1) N.C.
<b>Base Material</b>	Plastic

<b>Bezel Material</b>	Plastic
<b>Operator Color</b>	Red/green
<b>Operator Type</b>	Double headed
<b>Operator Size</b>	60mm
<b>Operator Shape</b>	Rectangular
<b>Operator Material</b>	Plastic
<b>Voltage Rating</b>	24 VAC/VDC
<b>Voltage Regulation</b>	Full voltage

## Agency Approvals

<b>UL Listed File #</b>	e189258
<b>UL Recognized File #</b>	None
<b>UL Hazardous File #</b>	None
<b>CE</b>	<a href="#">View CE declarations</a>
<b>CSA File #</b>	66746
<b>RoHS Status</b>	Yes (See CE Doc)
<b>EU REACH</b>	<a href="#">View EU REACH document</a>

## Dimensional Drawings



2D Drawing PDF Link:  
<https://cdn.automationdirect.com/static/drawings/GCX3151-24.pdf>  
See store item page for other formats.