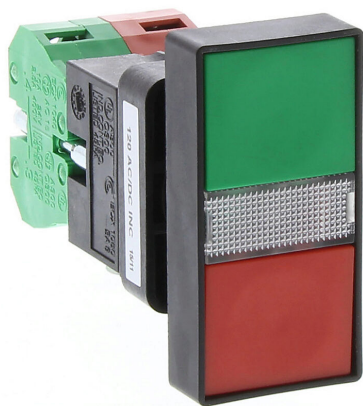


GCX3151-120 Cut Sheet



AutomationDirect pushbutton, IP40, 22mm, momentary, incandescent illuminated, (1) N.O./(1) N.C. contact(s), plastic base, plastic bezel, Operator: red/green, double headed, 60mm, rectangular, plastic, 120 VAC/VDC, full voltage.

For complete product information, please see this item on our store at the following link:



<https://www.automationdirect.com/pn/GCX3151-120>

Technical Specifications

Brand	AutomationDirect
Item	Pushbutton
IP Rating	IP40
Barrel Size	22mm
Action	Momentary
Bulb Type	Incandescent illuminated
Contact Type	(1) N.O./(1) N.C.
Base Material	Plastic

Bezel Material	Plastic
Operator Color	Red/green
Operator Type	Double headed
Operator Size	60mm
Operator Shape	Rectangular
Operator Material	Plastic
Voltage Rating	120 VAC/VDC
Voltage Regulation	Full voltage

Agency Approvals

UL Listed File #	e189258
UL Recognized File #	None
UL Hazardous File #	None
CE	View CE declarations
CSA File #	66746
RoHS Status	Yes (See CE Doc)
EU REACH	View EU REACH document

Dimensional Drawings



2D Drawing PDF Link:
<https://cdn.automationdirect.com/static/drawings/GCX3151-120.pdf>
See store item page for other formats.