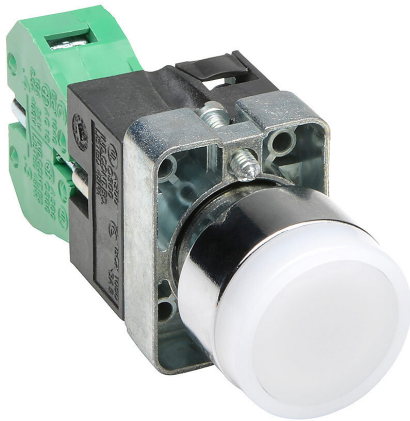


GCX1206-120 Cut Sheet



AutomationDirect pushbutton, IP65, 22mm, momentary, incandescent illuminated, (1) N.O. contact(s), metal base, metal bezel, plastic ring, Operator: white, flush, 30mm, round, plastic, 120 VAC/VDC, full voltage.

For complete product information, please see this item on our store at the following link:



<https://www.automationdirect.com/pn/GCX1206-120>

Technical Specifications

| | |
|----------------------------|--------------------------|
| Brand | AutomationDirect |
| Item | Pushbutton |
| IP Rating | IP65 |
| Barrel Size | 22mm |
| Action | Momentary |
| Bulb Type | Incandescent illuminated |
| Contact Type | (1) N.O. |
| Base Material | Metal |
| Bezel Material | Metal |
| Operator Protection | Plastic ring |
| Operator Color | White |
| Operator Type | Flush |
| Operator Size | 30mm |
| Operator Shape | Round |
| Operator Material | Plastic |
| Voltage Rating | 120 VAC/VDC |
| Voltage Regulation | Full voltage |

Agency Approvals

| | |
|-----------------------------|--|
| UL Listed File # | None |
| UL Recognized File # | E189258 |
| UL Hazardous File # | None |
| CE | View CE declarations |
| RoHS Status | Yes (See CE Doc) |
| EU REACH | View EU REACH document |