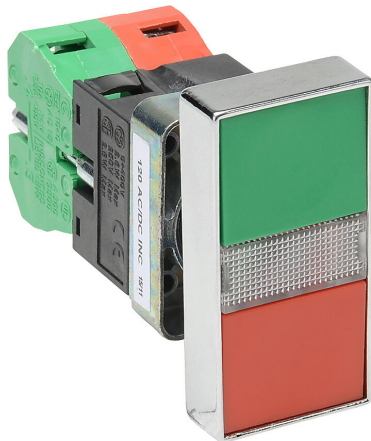


GCX1151-120 Cut Sheet



AutomationDirect pushbutton, IP65, 22mm, momentary, incandescent illuminated, (1) N.O./ (1) N.C. contact(s), metal base, metal bezel, Operator: red/green, double headed, 60mm, rectangular, plastic, 120 VAC/VDC, full voltage.

For complete product information, please see this item on our store at the following link:



<https://www.automationdirect.com/pn/GCX1151-120>

Technical Specifications

Brand	AutomationDirect
Item	Pushbutton
IP Rating	IP65
Barrel Size	22mm
Action	Momentary
Bulb Type	Incandescent illuminated
Contact Type	(1) N.O./ (1) N.C.
Base Material	Metal
Bezel Material	Metal
Operator Color	Red/green
Operator Type	Double headed
Operator Size	60mm
Operator Shape	Rectangular
Operator Material	Plastic
Voltage Rating	120 VAC/VDC
Voltage Regulation	Full voltage

Agency Approvals

UL Listed File #	None
UL Recognized File #	E189258
UL Hazardous File #	None
CE	View CE declarations
RoHS Status	Yes (See CE Doc)
EU REACH	View EU REACH document