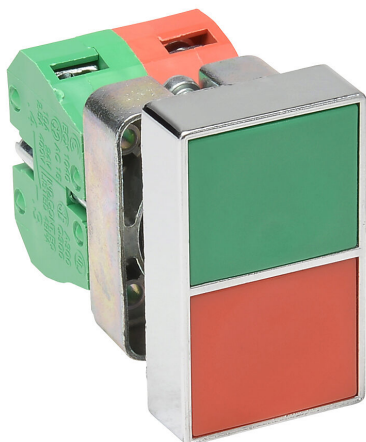


GCX1150 Cut Sheet



AutomationDirect pushbutton, IP65, 22mm, momentary, (1) N.O./ (1) N.C. contact(s), metal base, metal bezel, Operator: red/green, double headed, 50mm, rectangular, plastic.

For complete product information, please see this item on our store at the following link:



<https://www.automationdirect.com/pn/GCX1150>

Technical Specifications

Brand	AutomationDirect
Item	Pushbutton
IP Rating	IP65
Barrel Size	22mm
Action	Momentary
Contact Type	(1) N.O./ (1) N.C.
Base Material	Metal
Bezel Material	Metal
Operator Color	Red/green
Operator Type	Double headed
Operator Size	50mm
Operator Shape	Rectangular
Operator Material	Plastic

Agency Approvals

UL Listed File #	None
UL Recognized File #	E189258
UL Hazardous File #	None
CE	View CE declarations
RoHS Status	Yes (See CE Doc)
EU REACH	View EU REACH document

Dimensional Drawings



2D Drawing PDF Link:
<https://cdn.automationdirect.com/static/drawings/GCX1150.pdf>
See store item page for other formats.