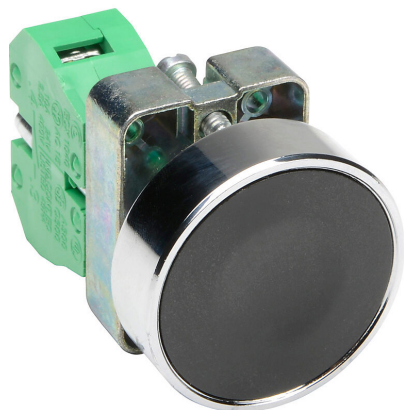


# GCX1120 Cut Sheet



AutomationDirect pushbutton, IP65, 22mm, momentary, (1) N.O. contact(s), metal base, metal bezel, Operator: black, flush, 40mm, round, plastic.

For complete product information, please see this item on our store at the following link:



<https://www.automationdirect.com/pn/GCX1120>

---

## Technical Specifications

<b>Brand</b>	AutomationDirect
<b>Item</b>	Pushbutton
<b>IP Rating</b>	IP65
<b>Barrel Size</b>	22mm
<b>Action</b>	Momentary
<b>Contact Type</b>	(1) N.O.
<b>Base Material</b>	Metal
<b>Bezel Material</b>	Metal
<b>Operator Color</b>	Black
<b>Operator Type</b>	Flush
<b>Operator Size</b>	40mm
<b>Operator Shape</b>	Round
<b>Operator Material</b>	Plastic

---

## Agency Approvals

<b>UL Listed File #</b>	None
<b>UL Recognized File #</b>	E189258
<b>UL Hazardous File #</b>	None
<b>CE</b>	<a href="#">View CE declarations</a>
<b>RoHS Status</b>	Yes (See CE Doc)
<b>EU REACH</b>	<a href="#">View EU REACH document</a>

---

## Dimensional Drawings



2D Drawing PDF Link:  
<https://cdn.automationdirect.com/static/drawings/GCX1120.pdf>  
See store item page for other formats.