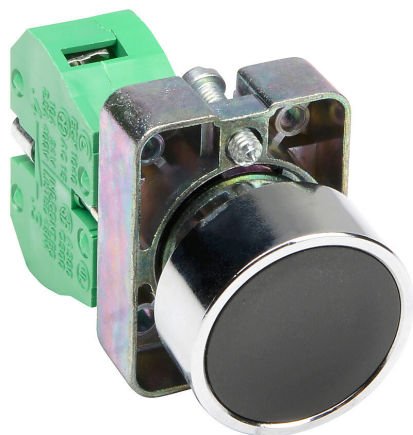


GCX1100 Cut Sheet



AutomationDirect pushbutton, IP65, 22mm, momentary, (1) N.O. contact(s), metal base, metal bezel, Operator: black, flush, 30mm, round, plastic.

For complete product information, please see this item on our store at the following link:



<https://www.automationdirect.com/pn/GCX1100>

Technical Specifications

| | |
|-------------------|------------------|
| Brand | AutomationDirect |
| Item | Pushbutton |
| IP Rating | IP65 |
| Barrel Size | 22mm |
| Action | Momentary |
| Contact Type | (1) N.O. |
| Base Material | Metal |
| Bezel Material | Metal |
| Operator Color | Black |
| Operator Type | Flush |
| Operator Size | 30mm |
| Operator Shape | Round |
| Operator Material | Plastic |

Agency Approvals

| | |
|----------------------|--|
| UL Listed File # | None |
| UL Recognized File # | E189258 |
| UL Hazardous File # | None |
| CE | View CE declarations |
| RoHS Status | Yes (See CE Doc) |
| EU REACH | View EU REACH document |

Dimensional Drawings



2D Drawing PDF Link:
<https://cdn.automationdirect.com/static/drawings/GCX1100.pdf>
See store item page for other formats.