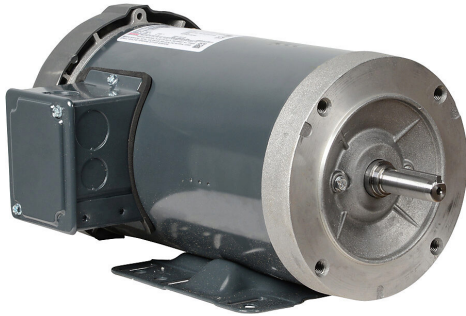


# G584A Cut Sheet



Marathon XRI premium efficiency AC induction motor, general purpose, inverter rated and 4-in-1, 1-1/2hp, 3-phase, 230/460 VAC, suitable for 208 VAC at 60 Hz, 1800rpm, TEFC, NEMA 56HC frame, rolled steel, C-face/removable rigid base mount.

For complete product information, please see this item on our store at the following link:



<https://www.automationdirect.com/pn/G584A>

## Technical Specifications

<b>Brand</b>	Marathon
<b>Item</b>	Motor
<b>Series</b>	XRI
<b>Efficiency Group</b>	Premium efficiency
<b>Efficiency</b>	86.5
<b>Voltage Type</b>	AC
<b>Motor Type</b>	Induction
<b>Motor Application</b>	General purpose, inverter rated and 4-in-1
<b>Horsepower Rating</b>	1-1/2hp
<b>Number of Phases</b>	3
<b>Voltage Rating</b>	230/460 VAC, suitable for 208 VAC at 60 Hz
<b>Synchronous Speed</b>	1800rpm
<b>Nameplate RPM</b>	1725/1425rpm
<b>Overload Type</b>	None
<b>Enclosure Type</b>	TEFC
<b>Shaft Type</b>	Round with square key

<b>Shaft Diameter</b>	5/8in
<b>Shaft Material</b>	AISI 1215 (MS1000) steel
<b>Motor Frame</b>	NEMA 56HC
<b>Frame Material</b>	Rolled steel
<b>Electrically Reversible</b>	Yes
<b>Insulation Class</b>	Class F
<b>IP Rating</b>	IP43
<b>Constant Torque Rating</b>	10:1
<b>Variable Torque Rating</b>	10:1
<b>Service Factor</b>	1.15
<b>Integrated Brake</b>	No
<b>NEMA Design</b>	Design B
<b>Junction Box Orientation</b>	F1
<b>Mounting</b>	C-face/removable rigid base
<b>Mounting Orientation</b>	Horizontal or vertical
<b>Manufacturer Part Number</b>	056T17F15641

## Agency Approvals

<b>UL Listed File #</b>	None
<b>UL Recognized File #</b>	E49747
<b>UL Hazardous File #</b>	None
<b>CE</b>	<a href="#">View CE declarations</a>
<b>CSA File #</b>	LR2025
<b>RoHS Status</b>	Yes (See CE Doc)
<b>EU REACH</b>	<a href="#">View EU REACH document</a>

## Dimensional Drawings



2D Drawing PDF Link:  
<https://cdn.automationdirect.com/static/drawings/G584A.pdf>  
See store item page for other formats.