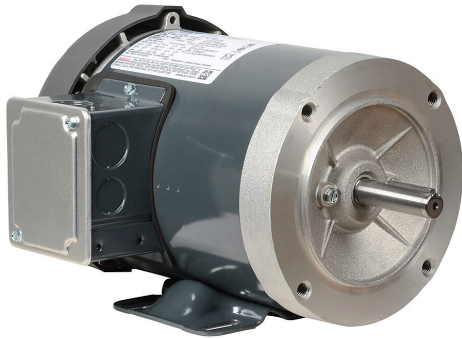


G582 Cut Sheet



Marathon XRI standard efficiency AC induction motor, general purpose, inverter rated and 4-in-1, 3/4hp, 3-phase, 208-230/460 VAC, 1800rpm, TEFC, NEMA 56C frame, rolled steel, C-face/removable rigid base mount.

For complete product information, please see this item on our store at the following link:



<https://www.automationdirect.com/pn/G582>

Technical Specifications

Brand	Marathon
Item	Motor
Series	XRI
Efficiency Group	Standard efficiency
Efficiency	75.5
Voltage Type	AC
Motor Type	Induction
Motor Application	General purpose, inverter rated and 4-in-1
Horsepower Rating	3/4hp
Number of Phases	3
Voltage Rating	208-230/460 VAC
Synchronous Speed	1800rpm
Nameplate RPM	1725/1425rpm
Overload Type	None
Enclosure Type	TEFC
Shaft Type	Round with square key

Shaft Diameter	5/8in
Shaft Material	1144 Stressproof (C-223) steel
Motor Frame	NEMA 56C
Frame Material	Rolled steel
Electrically Reversible	Yes
Insulation Class	Class F
IP Rating	IP43
Constant Torque Rating	10:1
Variable Torque Rating	10:1
Service Factor	1.15
Integrated Brake	No
NEMA Design	Design B
Junction Box Orientation	F1
Mounting	C-face/removable rigid base
Mounting Orientation	Horizontal or vertical
Manufacturer Part Number	056T17F5322

Agency Approvals

UL Listed File #	None
UL Recognized File #	E49747
UL Hazardous File #	None
CE	View CE declarations
CSA File #	LR2025
RoHS Status	Yes (See CE Doc)
EU REACH	View EU REACH document

Dimensional Drawings



2D Drawing PDF Link:
<https://cdn.automationdirect.com/static/drawings/G582.pdf>
See store item page for other formats.