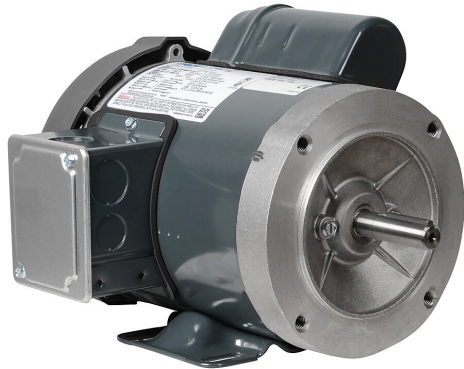


# G571 Cut Sheet



Marathon standard efficiency AC induction motor, general purpose and 4-in-1, 1/2hp, 1-phase, 115/208-230 VAC, 1800rpm, TEFC, 56C frame, rolled steel, C-face/removable rigid base mount.

For complete product information, please see this item on our store at the following link:



<https://www.automationdirect.com/pn/G571>

## Technical Specifications

<b>Brand</b>	Marathon
<b>Item</b>	Motor
<b>Efficiency Group</b>	Standard efficiency
<b>Efficiency</b>	66
<b>Voltage Type</b>	AC
<b>Motor Type</b>	Induction
<b>Motor Application</b>	General purpose and 4-in-1
<b>Horsepower Rating</b>	1/2hp
<b>Number of Phases</b>	1
<b>Voltage Rating</b>	115/208-230 VAC
<b>Synchronous Speed</b>	1800rpm
<b>Nameplate RPM</b>	1725/1425rpm
<b>Overload Type</b>	None
<b>Enclosure Type</b>	TEFC
<b>Shaft Type</b>	Round with square key

<b>Shaft Diameter</b>	5/8in
<b>Shaft Material</b>	1144 Stressproof (C-223) steel
<b>Motor Frame</b>	56C
<b>Frame Material</b>	Rolled steel
<b>Electrically Reversible</b>	Yes
<b>Insulation Class</b>	Class B
<b>IP Rating</b>	IP43
<b>Service Factor</b>	1.15 (sine), 1.0 (drive)
<b>Integrated Brake</b>	No
<b>NEMA Design</b>	Design N
<b>Junction Box Orientation</b>	F1
<b>Mounting</b>	C-face/removable rigid base
<b>Mounting Orientation</b>	Horizontal
<b>Manufacturer Part Number</b>	056C17F5321

## Agency Approvals

<b>UL Listed File #</b>	None
<b>UL Recognized File #</b>	E49747
<b>UL Hazardous File #</b>	None
<b>CE</b>	<a href="#">View CE declarations</a>
<b>CSA File #</b>	LR2025
<b>RoHS Status</b>	Yes (See CE Doc)
<b>EU REACH</b>	<a href="#">View EU REACH document</a>