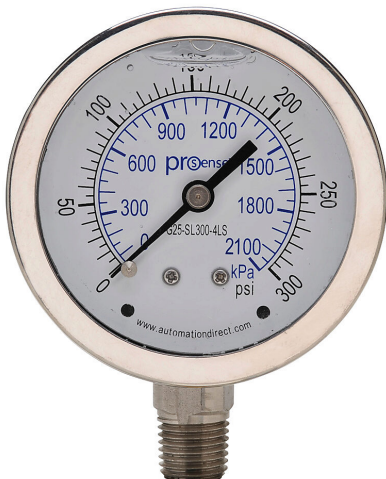


G25-SL300-4LS Cut Sheet



ProSense mechanical pressure gauge, 2.5in diameter, 0 to 300 psig/0 to 2100 kPa, stainless steel liquid filled case, stainless steel wetted parts, 1/4in male NPT process connection, lower mount.

For complete product information, please see this item on our store at the following link:



<https://www.automationdirect.com/pn/G25-SL300-4LS>

Technical Specifications

| | |
|---------------------------------|--|
| Brand | ProSense |
| Item | Mechanical pressure gauge |
| Media Type | Liquid, air, gases, oil, water and chemicals |
| Diameter | 2.5in |
| Scale | 0 to 300 psig/0 to 2100 kPa |
| Case Type | Stainless steel liquid filled |
| Wetted Parts | Stainless steel |
| Sensing Element Material | 316 stainless steel |
| Process Connection | 1/4in male NPT |
| Mounting | Lower |

Agency Approvals

| | |
|-----------------------------|--|
| UL Listed File # | None |
| UL Recognized File # | None |
| UL Hazardous File # | None |
| CE | None |
| CSA File # | None |
| RoHS Status | No |
| EU REACH | View EU REACH document |

Dimensional Drawings



2D Drawing PDF Link:
<https://cdn.automationdirect.com/static/drawings/G25-SL300-4LS.pdf>
See store item page for other formats.