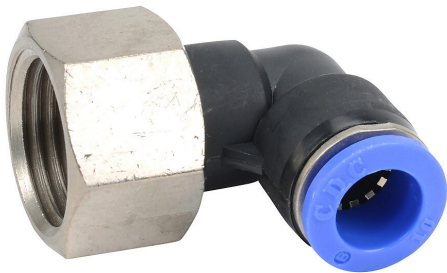


# FE10M-12R Cut Sheet



NITRA pneumatic push-to-connect fitting, elbow, rotating, thermoplastic (PBT) body, nickel-plated brass threads, (1) R1/2 female BSPT to (1) 10mm push-to-connect. Package of 5.

For complete product information, please see this item on our store at the following link:



<https://www.automationdirect.com/pn/FE10M-12R>

## Technical Specifications

Brand	NITRA
Item	Fitting
Working Fluid	Air or inert gas
Fitting Connection Type	Push-to-connect
Fitting Type	Elbow
Fitting Function	Rotating
Body Material	Thermoplastic (PBT)
Thread Material	Nickel-plated brass

Thread Sealant	No
Fitting Measurement Type	Metric and SAE
Connection	(1) R1/2 female BSPT and (1) 10mm push-to-connect
Operating Pressure	-29.5in Hg to 150 psi
Operating Temperature	32 to 140 deg F
Quantity per Pack	5
For Use With	Flexible pneumatic tubing

## Agency Approvals

UL Listed File #	None
UL Recognized File #	None
UL Hazardous File #	None
CE	None
CSA File #	None
RoHS Status	No
EU REACH	<a href="#">View EU REACH document</a>

## Dimensional Drawings



2D Drawing PDF Link:  
<https://cdn.automationdirect.com/static/drawings/FE10M-12R.pdf>  
See store item page for other formats.