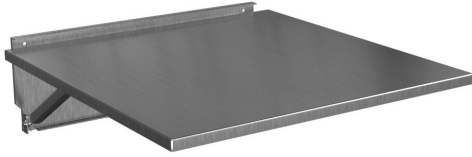


# FDS2424S16 Cut Sheet

Hammond enclosure folding shelf, 24 x 24in, 316 stainless steel, #4 brush finish, installs inside or outside of enclosure.

For complete product information, please see this item on our store at the following link:



<https://www.automationdirect.com/pn/FDS2424S16>

---

## Technical Specifications

<b>Brand</b>	Hammond
<b>Item</b>	Enclosure folding shelf
<b>Size</b>	24 x 24in
<b>Material</b>	316 stainless steel
<b>Finish</b>	#4 brush
<b>Application</b>	Installs inside or outside of enclosure

---

## Agency Approvals

<b>UL Listed File #</b>	None
<b>UL Recognized File #</b>	None
<b>UL Hazardous File #</b>	None
<b>CSA File #</b>	None
<b>RoHS Status</b>	Meets RoHS Chemical Restrictions - No CE (See RoHS Statement Below)
<b>EU REACH</b>	<a href="#">View EU REACH document</a>
<b>Other</b>	<a href="#">RoHS Statement</a>

---

## Dimensional Drawings



2D Drawing PDF Link:  
<https://cdn.automationdirect.com/static/drawings/FDS2424S16.pdf>  
See store item page for other formats.