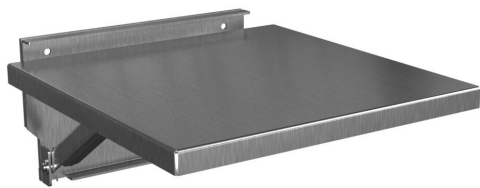


FDS1212S16 Cut Sheet

Hammond enclosure folding shelf, 12 x 12in, 316 stainless steel, #4 brush finish, installs inside or outside of enclosure.

For complete product information, please see this item on our store at the following link:



<https://www.automationdirect.com/pn/FDS1212S16>

Technical Specifications

Brand	Hammond
Item	Enclosure folding shelf
Size	12 x 12in
Material	316 stainless steel
Finish	#4 brush
Application	Installs inside or outside of enclosure

Agency Approvals

UL Listed File #	None
UL Recognized File #	None
UL Hazardous File #	None
CSA File #	None
RoHS Status	Meets RoHS Chemical Restrictions - No CE (See RoHS Statement Below)
EU REACH	View EU REACH document
Other	RoHS Statement

Dimensional Drawings



2D Drawing PDF Link:
<https://cdn.automationdirect.com/static/drawings/FDS1212S16.pdf>
See store item page for other formats.