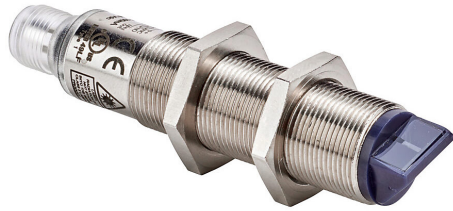


FALW-BN-3E Cut Sheet



AutomationDirect photoelectric sensor, tubular, threaded, nickel-plated brass, diffuse with background suppression, 90-degree, 30-130mm sensing distance, complementary light-on/dark-on, NPN, potentiometer, 1.5 kHz switching frequency, 4-pin M12 quick-disconnect.

For complete product information, please see this item on our store at the following link:



<https://www.automationdirect.com/pn/FALW-BN-3E>

Technical Specifications

Brand	AutomationDirect
Item	Photoelectric sensor
Shape	Tubular
Barrel Type	Threaded
Housing Size	18mm diameter
IP Rating	IP67
Housing Material	Nickel-plated brass
Sensing Method	Diffuse with background suppression
Head Angle	90-degree
Operating Voltage	10-30 VDC

Switching Output	NPN
Sensing Distance	30-130mm
Sensitivity	Potentiometer
Operation Mode	Complementary light-on/dark-on
Switching Frequency	1.5 kHz
Light Emission	Class 2 laser
Connection	4-pin M12 quick-disconnect
Includes	Mounting hardware
Additional Information	Purchase cable separately

Agency Approvals

UL Listed File #	E187310
UL Recognized File #	None
UL Hazardous File #	None
CE	View CE declarations
CSA File #	None
RoHS Status	Yes (See CE Doc)
EU REACH	View EU REACH document

Dimensional Drawings



2D Drawing PDF Link:
<https://cdn.automationdirect.com/static/drawings/FALW-BN-3E.pdf>
See store item page for other formats.