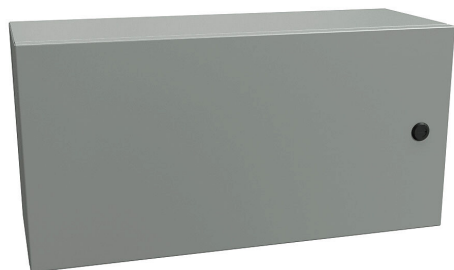


EN4SD12248GY Cut Sheet



Hammond Eclipse series enclosure, NEMA 3R/4/12, 12 x 24 x 8in (HxWxD), wall mount, carbon steel, ANSI 61 gray, powder coat finish, single-door, 1/4-turn semi-flush latch.

For complete product information, please see this item on our store at the following link:



<https://www.automationdirect.com/pn/EN4SD12248GY>

Technical Specifications

Brand	Hammond
Item	Enclosure
Series	Eclipse
Subpanel	Purchase subpanel separately
Slope Top	No
3-Piece Assembly	No
Vented	No
NEMA Rating	3R/4/12
IP Rating	IP66
Nominal Enclosure Dimensions	12 x 24 x 8in (HxWxD)
Enclosure Height	12.00in
Enclosure Width	24.00in
Enclosure Depth	8.82in
Mounting	Wall
Integral Mounting Feet	No

Integral Mounting Flange	No
Dual Access	No
Knockouts	No
Bottom Gland Plate	No
Material	Carbon steel
Color	ANSI 61 gray
Finish	Powder coat
Cover Type	Single-door
Hinge Type	Concealed hinges
Number of Hinges Per Door	2
Latch Type	1/4-turn semi-flush latch
Number Of Latches	1
Shelf	No
Padlockable	No
Keylocking	No

Agency Approvals

UL Listed File #	E65324
UL Recognized File #	None
UL Hazardous File #	None
CE	View CE declarations
CSA File #	LR21001
RoHS Status	Yes (See CE Doc)
EU REACH	View EU REACH document

Dimensional Drawings



2D Drawing PDF Link:
<https://cdn.automationdirect.com/static/drawings/EN4SD12248GY.pdf>
See store item page for other formats.