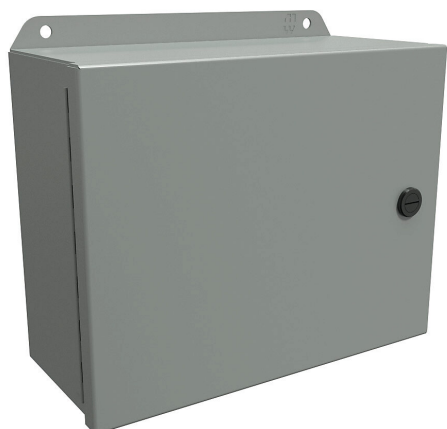


EJ8104 Cut Sheet



Hammond Eclipse Junior series enclosure, NEMA 3R/4/12/13, 8 x 10 x 4in (HxWxD), wall mount, carbon steel, ANSI 61 gray, powder coat finish, single-door, 1/4-turn semi-flush latch.

For complete product information, please see this item on our store at the following link:



<https://www.automationdirect.com/pn/EJ8104>

Technical Specifications

| | |
|-------------------------------------|----------------------|
| Brand | Hammond |
| Item | Enclosure |
| Series | Eclipse Junior |
| Subpanel | Subpanel included |
| Slope Top | No |
| NEMA Rating | 3R/4/12/13 |
| IP Rating | IP66 |
| Nominal Enclosure Dimensions | 8 x 10 x 4in (HxWxD) |
| Enclosure Height | 8.00in |
| Enclosure Width | 10.16in |
| Enclosure Depth | 4.59in |
| Mounting | Wall |
| Integral Mounting Feet | No |

| | |
|----------------------------------|---------------------------|
| Integral Mounting Flange | Yes |
| Dual Access | No |
| Knockouts | No |
| Material | Carbon steel |
| Color | ANSI 61 gray |
| Finish | Powder coat |
| Cover Type | Single-door |
| Hinge Type | Continuous hinge |
| Number of Hinges Per Door | 1 |
| Latch Type | 1/4-turn semi-flush latch |
| Number Of Latches | 1 |
| Padlockable | No |
| Keylocking | No |

Agency Approvals

| | |
|-----------------------------|--|
| UL Listed File # | E65324 |
| UL Recognized File # | None |
| UL Hazardous File # | None |
| CE | View CE declarations |
| CSA File # | LR21001 |
| RoHS Status | Yes (See CE Doc) |
| EU REACH | View EU REACH document |