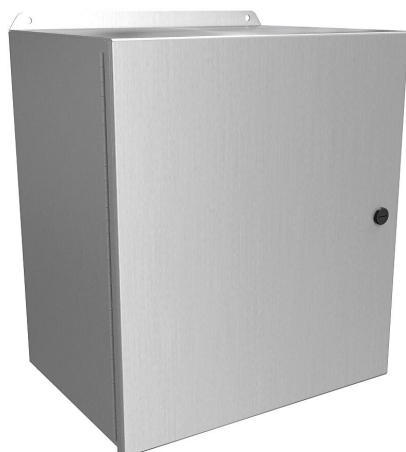


EJ161410AL Cut Sheet



Hammond Eclipse Junior series enclosure, NEMA 3R/4/4X/12/13, 16 x 14 x 10in (HxWxD), wall mount, 5052-H32 aluminum, single-door, 1/4-turn semi-flush 316 stainless steel latch.

For complete product information, please see this item on our store at the following link:



<https://www.automationdirect.com/pn/EJ161410AL>

Technical Specifications

Brand	Hammond
Item	Enclosure
Series	Eclipse Junior
Subpanel	Subpanel included
Slope Top	No
NEMA Rating	3R/4/4X/12/13
IP Rating	IP66
Nominal Enclosure Dimensions	16 x 14 x 10in (HxWxD)
Enclosure Height	16.00in
Enclosure Width	14.00in
Enclosure Depth	10.62in
Mounting	Wall

Integral Mounting Feet	No
Integral Mounting Flange	Yes
Dual Access	No
Knockouts	No
Material	5052-H32 aluminum
Cover Type	Single-door
Hinge Type	Continuous hinge
Number of Hinges Per Door	1
Latch Type	1/4-turn semi-flush 316 stainless steel latch
Number Of Latches	1
Padlockable	No
Keylocking	No

Agency Approvals

UL Listed File #	E65324
UL Recognized File #	None
UL Hazardous File #	None
CE	View CE declarations
CSA File #	LR21001
RoHS Status	Yes (See CE Doc)
EU REACH	View EU REACH document