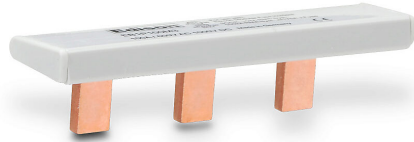


EB1P100M3 Cut Sheet



Edison busbar, 100A, 600 VAC/1000 VDC, 3 -pin, cut to length permitted, connects up to (3) 1-pole Edison EHM or EHCC series fuse holders. (2) EECAP1P end caps included.

For complete product information, please see this item on our store at the following link:



<https://www.automationdirect.com/pn/EB1P100M3>

Technical Specifications

Brand	Edison
Item	Busbar
Amperage Rating	100A
Voltage Rating	600 VAC/1000 VDC
Number Of Pins	3
Cut to Length	Permitted
Application	Connects up to (3) 1-pole Edison EHM or EHCC series fuse holders
Includes	(2) EECAP1P end caps
Requires	EPWR1PLP or EPWR50MM wiring lug to connect wiring to comb bus
Additional Information	Wiring lugs purchased separately. Use EFSCVR to cover unused comb bus pins

Agency Approvals

UL Listed File #	E195399
UL Recognized File #	None
UL Hazardous File #	None
CE	View CE declarations
CSA File #	None
RoHS Status	No
EU REACH	View EU REACH document
Other	None

Dimensional Drawings



2D Drawing PDF Link:
<https://cdn.automationdirect.com/static/drawings/EB1P100M3.pdf>
See store item page for other formats.