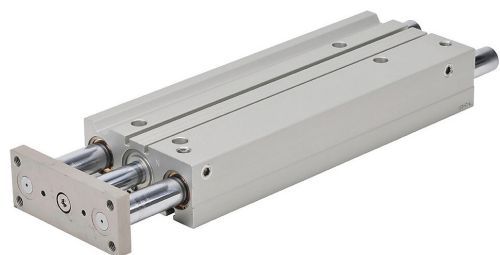


# E32M250MD-M Cut Sheet



NITRA pneumatic cylinder, dual guide rod, 32mm bore, 16mm rod diameter, 250mm stroke, double acting, magnetic piston, universal mount.

For complete product information, please see this item on our store at the following link:



<https://www.automationdirect.com/pn/E32M250MD-M>

## Technical Specifications

<b>Brand</b>	NITRA
<b>Item</b>	Cylinder
<b>Working Fluid</b>	Air
<b>Cylinder Type</b>	Dual guide rod
<b>Bore Diameter</b>	32mm
<b>Stroke</b>	250mm
<b>Port Size</b>	1/8in female NPT
<b>Mounting</b>	Universal
<b>Action Type</b>	Double acting
<b>Magnetic Piston</b>	Magnetic piston
<b>Body Material</b>	Aluminum
<b>Rod Material</b>	Chrome-plated steel
<b>Rod Diameter</b>	16mm
<b>Rod Thread Size</b>	3/4-16
<b>Bushing Type</b>	Bronze bushings

## Agency Approvals

<b>UL Listed File #</b>	None
<b>UL Recognized File #</b>	None
<b>UL Hazardous File #</b>	None
<b>CE</b>	None
<b>CSA File #</b>	None
<b>RoHS Status</b>	No
<b>EU REACH</b>	<a href="#">View EU REACH document</a>