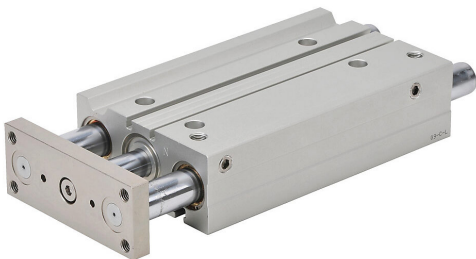


# E32M150MD-M Cut Sheet



NITRA pneumatic cylinder, dual guide rod, 32mm bore, 16mm rod diameter, 150mm stroke, double acting, magnetic piston, universal mount.

For complete product information, please see this item on our store at the following link:



<https://www.automationdirect.com/pn/E32M150MD-M>

## Technical Specifications

Brand	NITRA
Item	Cylinder
Working Fluid	Air or inert gas
Cylinder Type	Dual guide rod
Bore Diameter	32mm
Stroke	150mm
Port Size	1/8in female NPT
Mounting	Universal

Action Type	Double acting
Magnetic Piston	Magnetic piston
Body Material	Aluminum
Rod Material	Chrome-plated steel
Rod Diameter	16mm
Rod Thread Size	3/4-16
Bushing Type	Bronze bushings

## Agency Approvals

UL Listed File #	None
UL Recognized File #	None
UL Hazardous File #	None
CE	None
CSA File #	None
RoHS Status	No
EU REACH	<a href="#">View EU REACH document</a>

## Dimensional Drawings



2D Drawing PDF Link:  
<https://cdn.automationdirect.com/static/drawings/E32M150MD-M.pdf>  
See store item page for other formats.