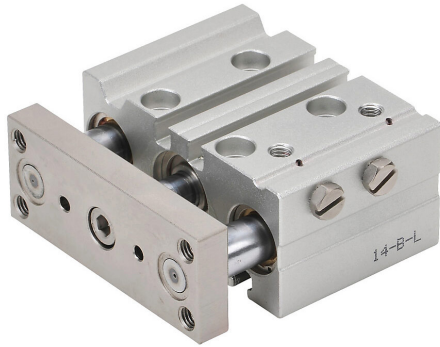


# E16M010MD-M Cut Sheet



NITRA pneumatic cylinder, dual guide rod, 16mm bore, 8mm rod diameter, 10mm stroke, double acting, magnetic piston, universal mount.

For complete product information, please see this item on our store at the following link:



<https://www.automationdirect.com/pn/E16M010MD-M>

## Technical Specifications

<b>Brand</b>	NITRA
<b>Item</b>	Cylinder
<b>Working Fluid</b>	Air or inert gas
<b>Cylinder Type</b>	Dual guide rod
<b>Bore Diameter</b>	16mm
<b>Stroke</b>	10mm
<b>Port Size</b>	M5 x 0.8 female ISO
<b>Mounting</b>	Universal

<b>Action Type</b>	Double acting
<b>Magnetic Piston</b>	Magnetic piston
<b>Body Material</b>	Aluminum
<b>Rod Material</b>	Chrome-plated steel
<b>Rod Diameter</b>	8mm
<b>Rod Thread Size</b>	3/4-16
<b>Bushing Type</b>	Bronze bushings

## Agency Approvals

<b>UL Listed File #</b>	None
<b>UL Recognized File #</b>	None
<b>UL Hazardous File #</b>	None
<b>CE</b>	None
<b>CSA File #</b>	None
<b>RoHS Status</b>	No
<b>EU REACH</b>	<a href="#">View EU REACH document</a>

## Dimensional Drawings



2D Drawing PDF Link:  
<https://cdn.automationdirect.com/static/drawings/E16M010MD-M.pdf>  
See store item page for other formats.