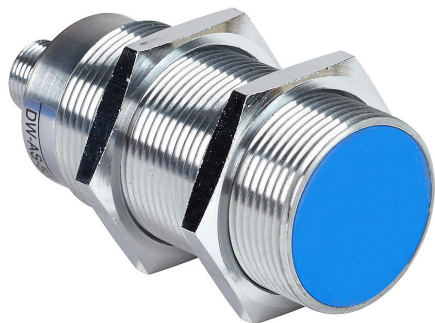


DW-AS-503-M30-002 Cut Sheet



Contrinex inductive proximity sensor, tubular, 30mm diameter x 73.5mm body, chrome-plated brass housing, PNP, N.O. output, 22mm sensing distance, semi-flush, 200 Hz switching frequency, IP67, 4-pin M12 quick-disconnect.

For complete product information, please see this item on our store at the following link:



<https://www.automationdirect.com/pn/DW-AS-503-M30-002>

Technical Specifications

Brand	Contrinex
Item	Proximity sensor
Sensor Type	Inductive
Application	Standard duty
Shape	Tubular
Housing Size	30mm diameter x 73.5mm body
Housing Material	Chrome-plated brass
Barrel Type	Threaded
Sensing Method	Triple sensing
Adjustable	No
Number of Wires	3
Switching Output	PNP
Operation Mode	N.O. output
Sensing Distance	22mm
Mounting Type	Semi-flush
IO-Link Compatible	Yes

Switching Frequency	200 Hz
Operating Voltage	10-30 VDC
Operating Temperature	-25 to 70c
Weld Field Immune	No
Chip Immune	No
IP Rating	IP67
Connection	4-pin M12 quick-disconnect
Communication Port and Connection Type(s)	(1) 4-pin M12 A-coded (IO-Link) port(s)
Port Protocol(s)	IO-Link Class A Device
Port Speed(s)	IO-Link COM2
IO-Link Version	IO-Link v1.0
Standard I/O Mode Supported	Yes
Includes	Mounting hardware
Additional Information	Purchase cable separately

Agency Approvals

UL Listed File #	E239373
UL Recognized File #	None
UL Hazardous File #	None
CE	View CE declarations
CSA File #	None
RoHS Status	Yes (See CE Doc)
EU REACH	View EU REACH document

Dimensional Drawings



2D Drawing PDF Link:
<https://cdn.automationdirect.com/static/drawings/DW-AS-503-M30-002.pdf>
See store item page for other formats.