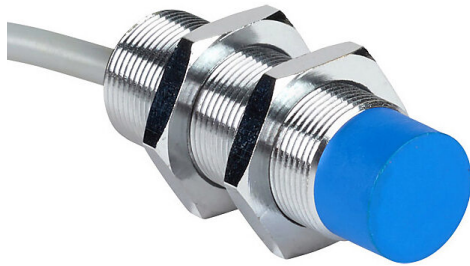


DW-AD-514-M18 Cut Sheet



Contrinex inductive proximity sensor, tubular, 18mm diameter x 51mm body, chrome-plated brass housing, PNP, N.C. output, 20mm sensing distance, non-flush, 500 Hz switching frequency, IP67, pigtail.

For complete product information, please see this item on our store at the following link:



<https://www.automationdirect.com/pn/DW-AD-514-M18>

Technical Specifications

| | |
|-------------------------|---------------------------|
| Brand | Contrinex |
| Item | Proximity sensor |
| Sensor Type | Inductive |
| Application | Standard duty |
| Shape | Tubular |
| Housing Size | 18mm diameter x 51mm body |
| Housing Material | Chrome-plated brass |
| Barrel Type | Threaded |
| Sensing Method | Triple sensing |
| Adjustable | No |
| Number of Wires | 3 |
| Switching Output | PNP |
| Operation Mode | N.C. output |

| | |
|------------------------------|-------------------|
| Sensing Distance | 20mm |
| Mounting Type | Non-flush |
| IO-Link Compatible | No |
| Switching Frequency | 500 Hz |
| Operating Voltage | 10-30 VDC |
| Operating Temperature | -25 to 70c |
| Weld Field Immune | No |
| Chip Immune | No |
| IP Rating | IP67 |
| Connection | Pigtail |
| Conductor Size | 22 AWG |
| Cable Length | 6.5ft/2m |
| Includes | Mounting hardware |

Agency Approvals

| | |
|-----------------------------|--|
| UL Listed File # | E239373 |
| UL Recognized File # | None |
| UL Hazardous File # | None |
| CE | View CE declarations |
| CSA File # | None |
| RoHS Status | Yes (See CE Doc) |
| EU REACH | View EU REACH document |

Dimensional Drawings



2D Drawing PDF Link:
<https://cdn.automationdirect.com/static/drawings/DW-AD-514-M18.pdf>
See store item page for other formats.