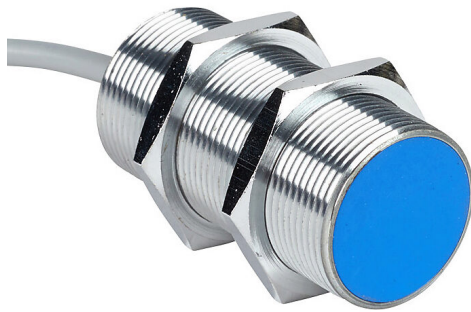


# DW-AD-503-M30 Cut Sheet



Contrinex inductive proximity sensor, tubular, 30mm diameter x 60mm body, chrome-plated brass housing, PNP, N.O. output, 22mm sensing distance, semi-flush, 200 Hz switching frequency, IP67, pigtail.

For complete product information, please see this item on our store at the following link:



<https://www.automationdirect.com/pn/DW-AD-503-M30>

## Technical Specifications

<b>Brand</b>	Contrinex
<b>Item</b>	Proximity sensor
<b>Sensor Type</b>	Inductive
<b>Application</b>	Standard duty
<b>Shape</b>	Tubular
<b>Housing Size</b>	30mm diameter x 60mm body
<b>Housing Material</b>	Chrome-plated brass
<b>Barrel Type</b>	Threaded
<b>Sensing Method</b>	Triple sensing
<b>Adjustable</b>	No
<b>Number of Wires</b>	3
<b>Switching Output</b>	PNP
<b>Operation Mode</b>	N.O. output
<b>Sensing Distance</b>	22mm
<b>Mounting Type</b>	Semi-flush
<b>IO-Link Compatible</b>	Yes
<b>Switching Frequency</b>	200 Hz

<b>Operating Voltage</b>	10-30 VDC
<b>Operating Temperature</b>	-25 to 70c
<b>Weld Field Immune</b>	No
<b>Chip Immune</b>	No
<b>IP Rating</b>	IP67
<b>Connection</b>	Pigtail
<b>Communication Port and Connection Type(s)</b>	(1) 3-wire pigtail (IO-Link) port(s)
<b>Port Protocol(s)</b>	IO-Link Class A Device
<b>Port Speed(s)</b>	IO-Link COM2
<b>IO-Link Version</b>	IO-Link v1.0
<b>Standard I/O Mode Supported</b>	Yes
<b>Conductor Size</b>	22 AWG
<b>Cable Length</b>	6.5ft/2m
<b>Includes</b>	Mounting hardware

## Agency Approvals

<b>UL Listed File #</b>	E239373
<b>UL Recognized File #</b>	None
<b>UL Hazardous File #</b>	None
<b>CE</b>	<a href="#">View CE declarations</a>
<b>CSA File #</b>	None
<b>RoHS Status</b>	Yes (See CE Doc)
<b>EU REACH</b>	<a href="#">View EU REACH document</a>

## Dimensional Drawings



2D Drawing PDF Link:  
<https://cdn.automationdirect.com/static/drawings/DW-AD-503-M30.pdf>  
See store item page for other formats.