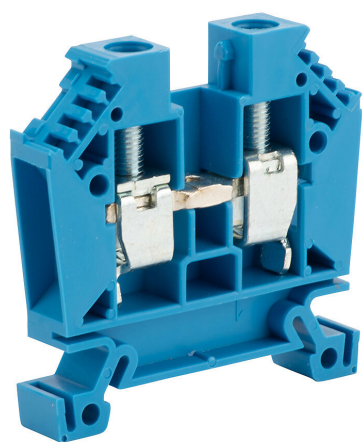


# DN-T6B Cut Sheet



DINnector screw single-level feedthrough terminal block, accepts wire size 18-6 AWG, blue, 65A, 35mm DIN rail mount, 100kA SCCR. Package of 50.

For complete product information, please see this item on our store at the following link:



<https://www.automationdirect.com/pn/DN-T6B>

## Technical Specifications

Brand	DINnector
Item	Terminal block
Connector Type	Screw
Terminal Block Type	Single-level feedthrough
Wire Size	18-6 AWG
Color	Blue
Amperage Rating	65A
Voltage Rating	600V rated (UL)
Mounting	35mm DIN rail
SCCR Rating	100kA SCCR
Quantity per Pack	50

## Agency Approvals

UL Listed File #	None
UL Recognized File #	E179129
UL Hazardous File #	None
CE	<a href="#">View CE declarations</a>
CSA File #	None
RoHS Status	Yes (See CE Doc)
EU REACH	<a href="#">View EU REACH document</a>