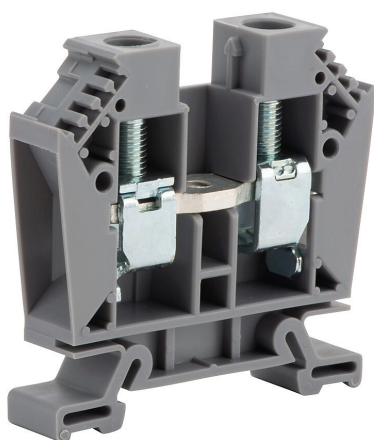


DN-T4 Cut Sheet



DINnector screw single-level feedthrough terminal block, accepts wire size 14-4 AWG, gray, 85A, 35mm DIN rail mount, 100kA SCCR. Package of 25.

For complete product information, please see this item on our store at the following link:



<https://www.automationdirect.com/pn/DN-T4>

Technical Specifications

Brand	DINnector
Item	Terminal block
Connector Type	Screw
Terminal Block Type	Single-level feedthrough
Wire Size	14-4 AWG
Color	Gray
Amperage Rating	85A
Voltage Rating	600V rated (UL)
Mounting	35mm DIN rail
SCCR Rating	100kA SCCR
Quantity per Pack	25

Agency Approvals

UL Listed File #	None
UL Recognized File #	E179129
UL Hazardous File #	None
CE	View CE declarations
CSA File #	None
RoHS Status	Yes (See CE Doc)
EU REACH	View EU REACH document