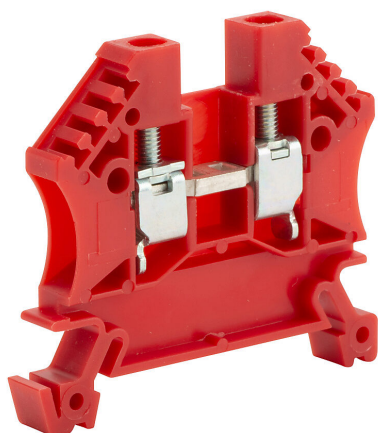


# DN-T10RED-A Cut Sheet



DINnector screw single-level feedthrough terminal block, accepts wire size 24-10 AWG, red, 30A, 35mm DIN rail mount, 100kA SCCR. Package of 100. For use with jumpers DN-24J4Y, DN-2J4Y and DN-3J4Y.

For complete product information, please see this item on our store at the following link:



<https://www.automationdirect.com/pn/DN-T10RED-A>

## Technical Specifications

|                     |                                       |
|---------------------|---------------------------------------|
| Brand               | DINnector                             |
| Item                | Terminal block                        |
| Connector Type      | Screw                                 |
| Terminal Block Type | Single-level feedthrough              |
| Wire Size           | 24-10 AWG                             |
| Color               | Red                                   |
| Amperage Rating     | 30A                                   |
| Voltage Rating      | 600V rated (UL)                       |
| Mounting            | 35mm DIN rail                         |
| SCCR Rating         | 100kA SCCR                            |
| Quantity per Pack   | 100                                   |
| For Use With        | Jumpers DN-24J4Y, DN-2J4Y and DN-3J4Y |

## Agency Approvals

|                      |  |
|----------------------|--|
| UL Listed File #     | None                                   |
| UL Recognized File # | E179129                                |
| UL Hazardous File #  | None                                   |
| CE                   | <a href="#">View CE declarations</a>   |
| CSA File #           | None                                   |
| RoHS Status          | Yes (See CE Doc)                       |
| EU REACH             | <a href="#">View EU REACH document</a> |

## Dimensional Drawings



2D Drawing PDF Link:  
<https://cdn.automationdirect.com/static/drawings/DN-T10RED-A.pdf>  
See store item page for other formats.