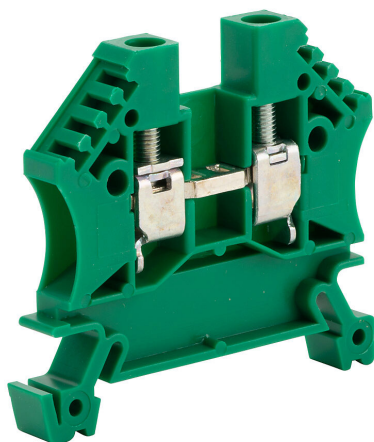


DN-T10GRN-A Cut Sheet



DINnector screw single-level feedthrough terminal block, accepts wire size 24-10 AWG, green, 30A, 35mm DIN rail mount, 100kA SCCR. Package of 100. For use with jumpers DN-24J4Y, DN-2J4Y and DN-3J4Y.

For complete product information, please see this item on our store at the following link:



<https://www.automationdirect.com/pn/DN-T10GRN-A>

Technical Specifications

Brand	DINnector
Item	Terminal block
Connector Type	Screw
Terminal Block Type	Single-level feedthrough
Wire Size	24-10 AWG
Color	Green
Amperage Rating	30A
Voltage Rating	600V rated (UL)
Mounting	35mm DIN rail
SCCR Rating	100kA SCCR
Quantity per Pack	100
For Use With	Jumpers DN-24J4Y, DN-2J4Y and DN-3J4Y

Agency Approvals

UL Listed File #	None
UL Recognized File #	E179129
UL Hazardous File #	None
CE	View CE declarations
CSA File #	None
RoHS Status	Yes (See CE Doc)
EU REACH	View EU REACH document

Dimensional Drawings



2D Drawing PDF Link:
<https://cdn.automationdirect.com/static/drawings/DN-T10GRN-A.pdf>
See store item page for other formats.