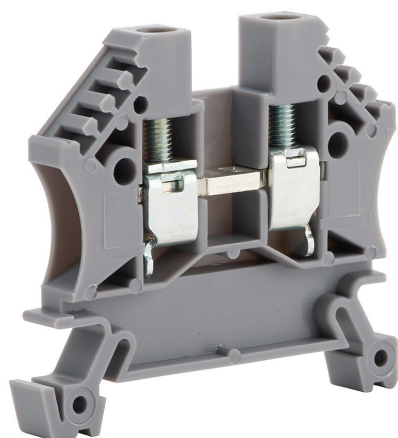


# DN-T10-A Cut Sheet



DINnector screw single-level feedthrough terminal block, accepts wire size 24-10 AWG, gray, 30A, 35mm DIN rail mount, 100kA SCCR. Package of 100. For use with jumpers DN-24J4Y, DN-2J4Y and DN-3J4Y.

For complete product information, please see this item on our store at the following link:



<https://www.automationdirect.com/pn/DN-T10-A>

## Technical Specifications

<b>Brand</b>	DINnector
<b>Item</b>	Terminal block
<b>Connector Type</b>	Screw
<b>Terminal Block Type</b>	Single-level feedthrough
<b>Wire Size</b>	24-10 AWG
<b>Color</b>	Gray
<b>Amperage Rating</b>	30A
<b>Voltage Rating</b>	600V rated (UL)
<b>Mounting</b>	35mm DIN rail
<b>SCCR Rating</b>	100kA SCCR
<b>Quantity per Pack</b>	100
<b>For Use With</b>	Jumpers DN-24J4Y, DN-2J4Y and DN-3J4Y

## Agency Approvals

<b>UL Listed File #</b>	None
<b>UL Recognized File #</b>	E179129
<b>UL Hazardous File #</b>	None
<b>CE</b>	<a href="#">View CE declarations</a>
<b>CSA File #</b>	None
<b>RoHS Status</b>	Yes (See CE Doc)
<b>EU REACH</b>	<a href="#">View EU REACH document</a>

## Dimensional Drawings



2D Drawing PDF Link:  
<https://cdn.automationdirect.com/static/drawings/DN-T10-A.pdf>  
See store item page for other formats.