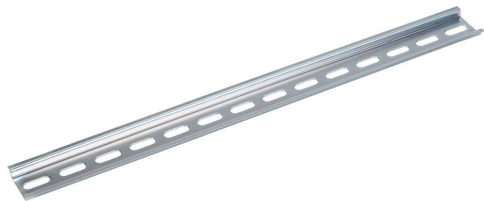


# DN-R35S-350-4 Cut Sheet



DINnector DIN rail, slotted, 35mm width, 7.5mm height, 350mm (13.78in) length, plated steel. Package of 4.

For complete product information, please see this item on our store at the following link:



<https://www.automationdirect.com/pn/DN-R35S-350-4>

---

## Technical Specifications

Brand	DINnector
Item	DIN rail
DIN Rail Type	Slotted
Width	35mm
Height	7.5mm
Length	350mm (13.78in)
Material	Plated steel
Quantity per Pack	4

---

## Agency Approvals

CE	<a href="#">View CE declarations</a>
RoHS Status	Yes (See CE Doc)
EU REACH	<a href="#">View EU REACH document</a>

---

## Dimensional Drawings



2D Drawing PDF Link:  
<https://cdn.automationdirect.com/static/drawings/2d/DN-R35S-350-4.pdf>  
See store item page for other formats.