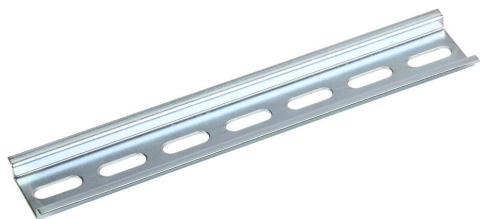


# DN-R35S-175-4 Cut Sheet



DINnector DIN rail, slotted, 35mm width, 7.5mm height, 175mm (6.89in) length, plated steel. Package of 4.

For complete product information, please see this item on our store at the following link:



<https://www.automationdirect.com/pn/DN-R35S-175-4>

---

## Technical Specifications

|                   |                |
|-------------------|----------------|
| Brand             | DINnector      |
| Item              | DIN rail       |
| DIN Rail Type     | Slotted        |
| Width             | 35mm           |
| Height            | 7.5mm          |
| Length            | 175mm (6.89in) |
| Material          | Plated steel   |
| Quantity per Pack | 4              |

---

## Agency Approvals

|             |  |
|-------------|--|
| CE          | <a href="#">View CE declarations</a>   |
| RoHS Status | Yes (See CE Doc)                       |
| EU REACH    | <a href="#">View EU REACH document</a> |

---

## Dimensional Drawings



2D Drawing PDF Link:  
<https://cdn.automationdirect.com/static/drawings/2d/DN-R35S-175-4.pdf>  
See store item page for other formats.