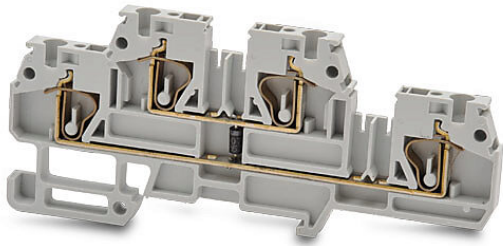


DN-QD12DR-A Cut Sheet



DINnector screwless double-level feedthrough terminal block, connected between levels and diode, accepts wire size 24-12 AWG, gray, 20A, 35mm DIN rail mount, 10kA SCCR. Package of 10. For use with jumpers DN-24J2Y, DN-2J2Y or DN-3J2Y.

For complete product information, please see this item on our store at the following link:



<https://www.automationdirect.com/pn/DN-QD12DR-A>

Technical Specifications

Brand	DINnector
Item	Terminal block
Connector Type	Screwless
Terminal Block Type	Double-level feedthrough
Terminal Block Special Feature(s)	Connected between levels and diode
Wire Size	24-12 AWG
Color	Gray
Amperage Rating	20A
Voltage Rating	600V rated (UL)
Mounting	35mm DIN rail
SCCR Rating	10kA SCCR
Quantity per Pack	10
For Use With	Jumpers DN-24J2Y, DN-2J2Y or DN-3J2Y

Agency Approvals

UL Listed File #	None
UL Recognized File #	E179129
UL Hazardous File #	None
CE	View CE declarations
CSA File #	None
RoHS Status	Yes (See CE Doc)
EU REACH	View EU REACH document

Dimensional Drawings



2D Drawing PDF Link:
<https://cdn.automationdirect.com/static/drawings/DN-QD12DR-A.pdf>
See store item page for other formats.