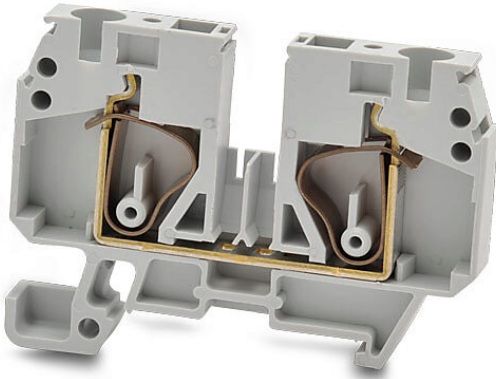


DN-Q8-A Cut Sheet



DINnector screwless single-level feedthrough terminal block, accepts wire size 22-8 AWG, gray, 45A, 35mm DIN rail mount, 10kA SCCR. Package of 50. For use with jumpers DN-12J6Y, DN-2J6Y or DN-3J6Y.

For complete product information, please see this item on our store at the following link:



<https://www.automationdirect.com/pn/DN-Q8-A>

Technical Specifications

Brand	DINnector
Item	Terminal block
Connector Type	Screwless
Terminal Block Type	Single-level feedthrough
Wire Size	22-8 AWG
Color	Gray
Amperage Rating	45A
Voltage Rating	600V rated (UL)
Mounting	35mm DIN rail
SCCR Rating	10kA SCCR
Quantity per Pack	50
For Use With	Jumpers DN-12J6Y, DN-2J6Y or DN-3J6Y

Agency Approvals

UL Listed File #	None
UL Recognized File #	E179129
UL Hazardous File #	None
CE	View CE declarations
CSA File #	None
RoHS Status	Yes (See CE Doc)
EU REACH	View EU REACH document

Dimensional Drawings



2D Drawing PDF Link:
<https://cdn.automationdirect.com/static/drawings/DN-Q8-A.pdf>
See store item page for other formats.