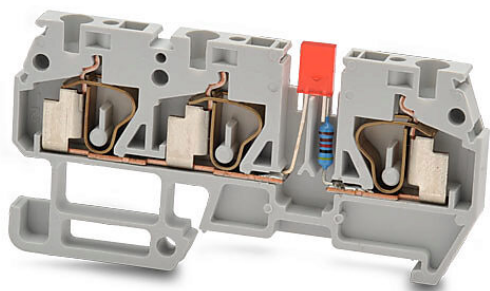


DN-Q12-1-2L2-A Cut Sheet



DINnector screwless common point single-level feedthrough terminal block, power indicator, accepts wire size 24-12 AWG, gray, 20A, 12-24 VAC/VDC LED indicator(s), 35mm DIN rail mount, 10kA SCCR. Package of 10.

For complete product information, please see this item on our store at the following link:



<https://www.automationdirect.com/pn/DN-Q12-1-2L2-A>

Technical Specifications

Brand	DINnector
Item	Terminal block
Connector Type	Screwless
Terminal Block Type	Common point single-level feedthrough
Terminal Block Special Feature(s)	Power indicator
Wire Size	24-12 AWG
Color	Gray
Amperage Rating	20A
Voltage Rating	12-24V
Indicator	12-24 VAC/VDC LED
Mounting	35mm DIN rail
SCCR Rating	10kA SCCR
Quantity per Pack	10

Agency Approvals

UL Listed File #	None
UL Recognized File #	E179129
UL Hazardous File #	None
CE	View CE declarations
CSA File #	None
RoHS Status	Yes (See CE Doc)
EU REACH	View EU REACH document