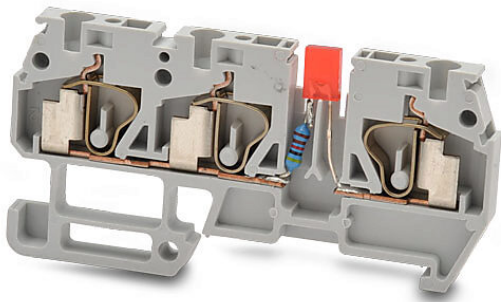


# DN-Q12-1-2L1-A Cut Sheet



DINnector screwless common point single-level feedthrough terminal block, one-connection to two-connection and power indicator, accepts wire size 24-12 AWG, gray, 20A, 12-24 VAC/VDC LED indicator(s), 35mm DIN rail mount, 10kA SCCR. Package of 10.

For complete product information, please see this item on our store at the following link:



<https://www.automationdirect.com/pn/DN-Q12-1-2L1-A>

## Technical Specifications

<b>Brand</b>	DINnector
<b>Item</b>	Terminal block
<b>Connector Type</b>	Screwless
<b>Terminal Block Type</b>	Common point single-level feedthrough
<b>Terminal Block Special Feature(s)</b>	One-connection to two-connection and power indicator
<b>Wire Size</b>	24-12 AWG
<b>Color</b>	Gray
<b>Amperage Rating</b>	20A
<b>Voltage Rating</b>	12-24V
<b>Indicator</b>	12-24 VAC/VDC LED
<b>Mounting</b>	35mm DIN rail
<b>SCCR Rating</b>	10kA SCCR
<b>Quantity per Pack</b>	10

## Agency Approvals

<b>UL Listed File #</b>	None
<b>UL Recognized File #</b>	E179129
<b>UL Hazardous File #</b>	None
<b>CE</b>	<a href="#">View CE declarations</a>
<b>CSA File #</b>	None
<b>RoHS Status</b>	Yes (See CE Doc)
<b>EU REACH</b>	<a href="#">View EU REACH document</a>