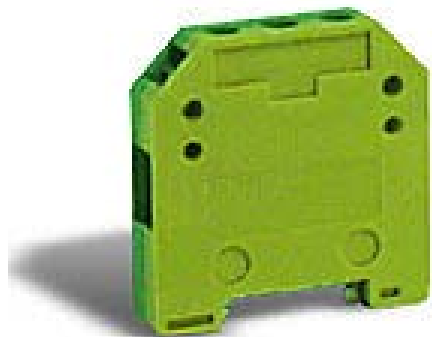


# DN-MG10 Cut Sheet



DINector screw mini grounding terminal block, accepts wire size 24-10 AWG, green and yellow, 15mm DIN rail mount, 10kA SCCR. Package of 20. Use to mechanically and electrically connect wires to 15mm DIN rail through the screw-down clamping foot.

For complete product information, please see this item on our store at the following link:



<https://www.automationdirect.com/pn/DN-MG10>

---

## Technical Specifications

<b>Brand</b>	DINector
<b>Item</b>	Terminal block
<b>Connector Type</b>	Screw
<b>Terminal Block Type</b>	Mini grounding
<b>Wire Size</b>	24-10 AWG
<b>Color</b>	Green and yellow
<b>Mounting</b>	15mm DIN rail
<b>SCCR Rating</b>	10kA SCCR
<b>Quantity per Pack</b>	20
<b>Application</b>	Use to mechanically and electrically connect wires to 15mm DIN rail through the screw-down clamping foot

---

## Agency Approvals

<b>UL Listed File #</b>	None
<b>UL Recognized File #</b>	E179129
<b>UL Hazardous File #</b>	None
<b>CE</b>	<a href="#">View CE declarations</a>
<b>CSA File #</b>	None
<b>RoHS Status</b>	Yes (See CE Doc)
<b>EU REACH</b>	<a href="#">View EU REACH document</a>
<b>Other</b>	None