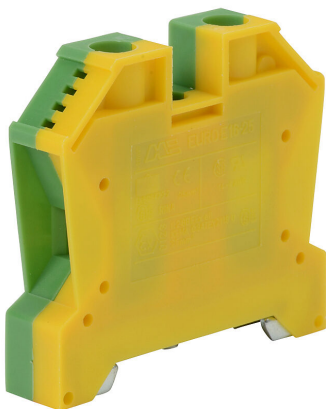


DN-G4MN Cut Sheet



DINnector screw grounding terminal block, accepts wire size 14-4 AWG, green and yellow, 35mm DIN rail mount, 10kA SCCR. Package of 8. Use to mechanically and electrically connect wires to 35mm DIN rail through the clamping foot.

For complete product information, please see this item on our store at the following link:



<https://www.automationdirect.com/pn/DN-G4MN>

Technical Specifications

Brand	DINnector
Item	Terminal block
Connector Type	Screw
Terminal Block Type	Grounding
Wire Size	14-4 AWG
Color	Green and yellow
Mounting	35mm DIN rail
SCCR Rating	10kA SCCR
Quantity per Pack	8
Application	Use to mechanically and electrically connect wires to 35mm DIN rail through the clamping foot

Agency Approvals

UL Listed File #	None
UL Recognized File #	E179129
UL Hazardous File #	None
CE	View CE declarations
CSA File #	None
RoHS Status	Yes (See CE Doc)
EU REACH	View EU REACH document