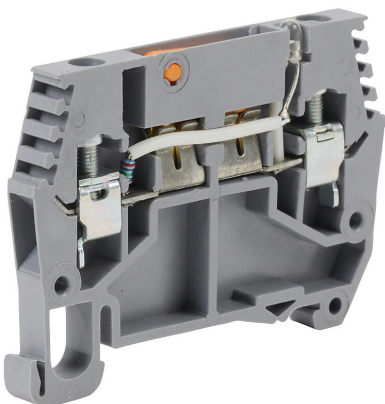


DN-DIS4L12MN Cut Sheet



DINnector screw disconnect terminal block, power indicator, accepts wire size 24-10 AWG, gray, 25A, 12 VAC/VDC LED indicator(s), 35mm DIN rail mount, 10kA SCCR. Package of 10.

For complete product information, please see this item on our store at the following link:



<https://www.automationdirect.com/pn/DN-DIS4L12MN>

Technical Specifications

Brand	DINnector
Item	Terminal block
Connector Type	Screw
Terminal Block Type	Disconnect
Terminal Block Special Feature(s)	Power indicator
Wire Size	24-10 AWG
Color	Gray
Amperage Rating	25A
Voltage Rating	300V rated (UL)
Indicator	12 VAC/VDC LED
Mounting	35mm DIN rail
SCCR Rating	10kA SCCR
Quantity per Pack	10

Agency Approvals

UL Listed File #	None
UL Recognized File #	E179129
UL Hazardous File #	None
CE	View CE declarations
CSA File #	None
RoHS Status	Yes (See CE Doc)
EU REACH	View EU REACH document

Dimensional Drawings



2D Drawing PDF Link:
<https://cdn.automationdirect.com/static/drawings/DN-DIS4L12MN.pdf>
See store item page for other formats.