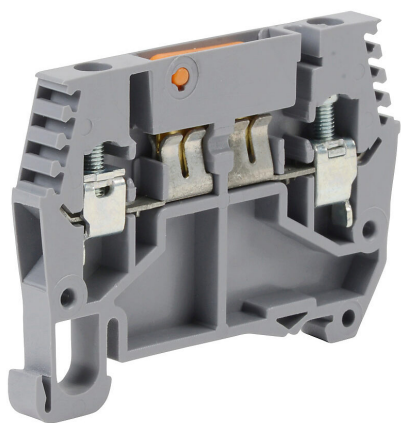


DN-DIS2MN Cut Sheet



DINnector screw disconnect terminal block, accepts wire size 24-12 AWG, gray, 20A, 35mm DIN rail mount, 10kA SCCR. Package of 10.

For complete product information, please see this item on our store at the following link:



<https://www.automationdirect.com/pn/DN-DIS2MN>

Technical Specifications

Brand	DINnector
Item	Terminal block
Connector Type	Screw
Terminal Block Type	Disconnect
Wire Size	24-12 AWG
Color	Gray
Amperage Rating	20A
Voltage Rating	300V rated (UL)
Mounting	35mm DIN rail
SCCR Rating	10kA SCCR
Quantity per Pack	10

Agency Approvals

UL Listed File #	None
UL Recognized File #	E179129
UL Hazardous File #	None
CE	View CE declarations
CSA File #	None
RoHS Status	Yes (See CE Doc)
EU REACH	View EU REACH document

Dimensional Drawings



2D Drawing PDF Link:
<https://cdn.automationdirect.com/static/drawings/DN-DIS2MN.pdf>
See store item page for other formats.