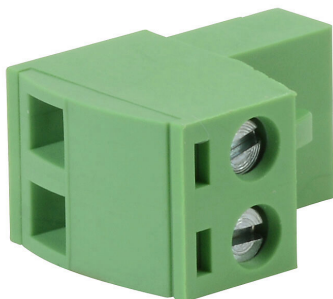


DN-2PLUGMN Cut Sheet



DINnector terminal plug, 2-pole, accepts wire size 22-14 AWG, green, 12A, 300V rated (UL), top wire entry with terminal screw 90 degrees from entry. For use with DN-EMXM1 or DN-EMXDV series terminal block. Package of 10.

For complete product information, please see this item on our store at the following link:



<https://www.automationdirect.com/pn/DN-2PLUGMN>

Technical Specifications

Brand	DINnector
Item	Terminal plug
Number of Poles	2
Wire Size	22-14 AWG
Color	Green
Amperage Rating	12A
Voltage Rating	300V rated (UL)
Configuration	Top wire entry with terminal screw 90 degrees from entry
For Use With	DN-EMXM1 or DN-EMXDV series terminal block
Quantity per Pack	10

Agency Approvals

UL Listed File #	None
UL Recognized File #	E179129
UL Hazardous File #	None
CE	View CE declarations
CSA File #	None
RoHS Status	Yes (See CE Doc)
EU REACH	View EU REACH document