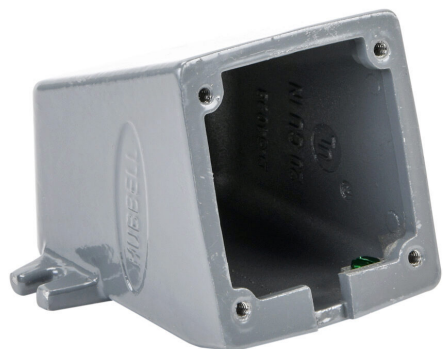


DM20301 Cut Sheet



Bryant dead end direct mount back box, (1) 3/4in female NPT conduit entries, cast aluminum housing, gray. For use with Bryant 20A and 30A devices. Mounting hardware included.

For complete product information, please see this item on our store at the following link:



<https://www.automationdirect.com/pn/DM20301>

Technical Specifications

Brand	Bryant
Item	Direct mount back box
Box Type	Dead end
Conduit Entry	(1) 3/4in female NPT
Housing Material	Cast aluminum
Color	Gray
For Use With	Bryant 20A and 30A devices
Includes	Mounting hardware

Agency Approvals

UL Listed File #	E31999
CE	View CE declarations
CSA File #	N/A
RoHS Status	Yes (See CE Doc)
EU REACH	View EU REACH document

Dimensional Drawings



2D Drawing PDF Link:
<https://cdn.automationdirect.com/static/drawings/2d/DM20301.pdf>
See store item page for other formats.