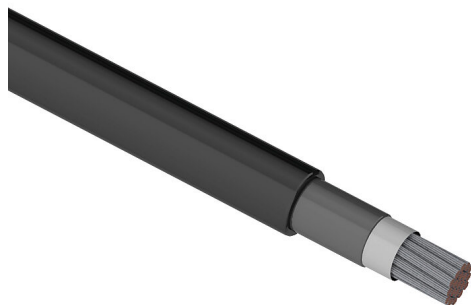


# DLO8BK-1 Cut Sheet



Southwire flexible power cable, unshielded, HDFPC-DLO, RHH/RHW-2 and RW90, single conductor, 8 AWG, tinned copper, EPDM thermoset rubber conductor insulation material, black, CPE thermoset rubber jacket, black, cut to length.

For complete product information, please see this item on our store at the following link:



<https://www.automationdirect.com/pn/DLO8BK-1>

## Technical Specifications

<b>Brand</b>	Southwire
<b>Item</b>	Cable
<b>Wire/Cable Type</b>	Power
<b>UL Wire/Cable Type</b>	HDFPC-DLO, RHH/RHW-2 and RW90
<b>Application</b>	Power
<b>Flexibility</b>	Flexible
<b>Voltage Rating</b>	2000V
<b>Conductors</b>	Single conductor
<b>Conductor Size</b>	8 AWG
<b>Conductor Stranding</b>	41-stranded
<b>Conductor Material</b>	Tinned copper
<b>Conductor Insulation Material</b>	EPDM thermoset rubber

<b>Conductor Insulation Color</b>	Black
<b>Shielding</b>	Unshielded
<b>Jacket Material</b>	CPE thermoset rubber
<b>Jacket Color</b>	Black
<b>Nominal Overall Cable Diameter</b>	0.33in
<b>Bulk Length</b>	Cut to length
<b>Package Type</b>	<ul style="list-style-type: none"><li>• 20 to 75ft = Coil</li><li>• 76 to 360ft = 14 x 7in Reel</li><li>• 361 to 510ft = 14 x 10in Reel</li><li>• 511 to 785ft = 16 x 10in Reel</li><li>• 786 to 1095ft = 18 x 10in Reel</li><li>• 1096 to 1425ft = 18 x 13in Reel</li><li>• 1426 to 2500ft = 24 x 17in Wooden Reel</li></ul>

## Agency Approvals

<b>UL Listed File #</b>	E30117
<b>UL Recognized File #</b>	None
<b>UL Hazardous File #</b>	None
<b>CE</b>	None
<b>CSA File #</b>	156205
<b>RoHS Status</b>	Meets RoHS Chemical Restrictions - No CE (See RoHS Statement Below)
<b>EU REACH</b>	<a href="#">View EU REACH document</a>
<b>Other</b>	<a href="#">RoHS Statement</a>