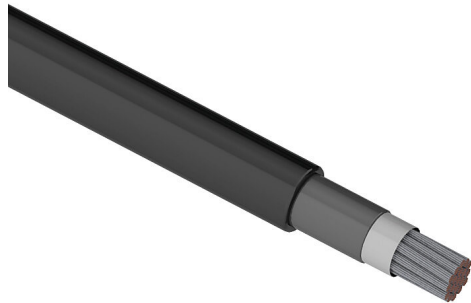


# DLO1-0BK-1 Cut Sheet



Southwire flexible power cable, unshielded, HDFPC-DLO, RHH/RHW-2 and RW90, single conductor, 1/0 AWG, tinned copper, EPDM thermoset rubber conductor insulation material, black, CPE thermoset rubber jacket, black, cut to length.

For complete product information, please see this item on our store at the following link:



<https://www.automationdirect.com/pn/DLO1-0BK-1>

## Technical Specifications

|                                      |                               |
|--------------------------------------|-------------------------------|
| <b>Brand</b>                         | Southwire                     |
| <b>Item</b>                          | Cable                         |
| <b>Wire/Cable Type</b>               | Power                         |
| <b>UL Wire/Cable Type</b>            | HDFPC-DLO, RHH/RHW-2 and RW90 |
| <b>Application</b>                   | Power                         |
| <b>Flexibility</b>                   | Flexible                      |
| <b>Voltage Rating</b>                | 2000V                         |
| <b>Conductors</b>                    | Single conductor              |
| <b>Conductor Size</b>                | 1/0 AWG                       |
| <b>Conductor Stranding</b>           | 266-stranded                  |
| <b>Conductor Material</b>            | Tinned copper                 |
| <b>Conductor Insulation Material</b> | EPDM thermoset rubber         |
| <b>Conductor Insulation Color</b>    | Black                         |

|                                       |   |
|---------------------------------------|---|
| <b>Shielding</b>                      | Unshielded  |
| <b>Jacket Material</b>                | CPE thermoset rubber  |
| <b>Jacket Color</b>                   | Black   |
| <b>Nominal Overall Cable Diameter</b> | 0.645in   |
| <b>Bulk Length</b>                    | Cut to length   |
| <b>Package Type</b>                   | <ul style="list-style-type: none"><li>• 20 to 50ft = Coil</li><li>• 51 to 95ft = 14 x 7in Reel</li><li>• 96 to 135ft = 14 x 10in Reel</li><li>• 136 to 205ft = 16 x 10in Reel</li><li>• 206 to 285ft = 18 x 10in Reel</li><li>• 286 to 375ft = 18 x 13in Reel</li><li>• 376 to 835ft = 24 x 17in Wooden Reel</li><li>• 836 to 1335ft = 30 x 17in Wooden Reel</li><li>• 1336 to 2500ft = Large Wooden Reel</li></ul> |

## Agency Approvals

|                             |   |
|-----------------------------|---|
| <b>UL Listed File #</b>     | E30117  |
| <b>UL Recognized File #</b> | None  |
| <b>UL Hazardous File #</b>  | None  |
| <b>CE</b>                   | None  |
| <b>CSA File #</b>           | 156205  |
| <b>RoHS Status</b>          | Meets RoHS Chemical Restrictions - No CE (See RoHS Statement Below) |
| <b>EU REACH</b>             | <a href="#">View EU REACH document</a>                              |
| <b>Other</b>                | <a href="#">RoHS Statement</a>                                      |