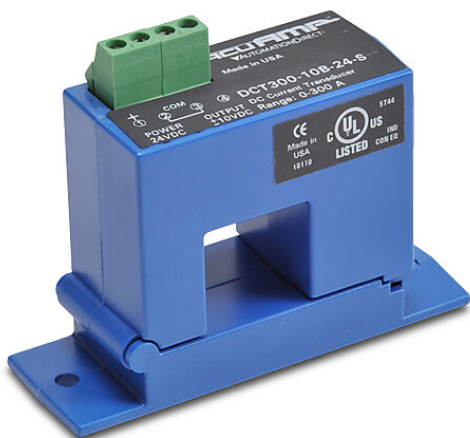


DCT300-10B-24-S Cut Sheet



AcuAMP DC current transducer, split core, bi-directional 0-300A sensing range, bipolar +/- 0-10 VDC output.

For complete product information, please see this item on our store at the following link:



<https://www.automationdirect.com/pn/DCT300-10B-24-S>

Technical Specifications

Brand	AcuAMP
Item	Current transducer
Voltage Type	DC
Body Type	Split core
Sensing Range	Bi-directional 0-300A
True RMS	No
Output	Bipolar +/- 0-10 VDC
Operating Voltage	20-45 VDC
Mounting	Panel or optional 35mm DIN rail
Electrical Connection	Screw terminals
UL Rating	UL 508 listed

Agency Approvals

UL Listed File #	E222847
UL Recognized File #	None
UL Hazardous File #	None
CE	View CE declarations
CSA File #	None
RoHS Status	Yes (See CE Doc)
EU REACH	View EU REACH document

Dimensional Drawings



2D Drawing PDF Link:
<https://cdn.automationdirect.com/static/drawings/DCT300-10B-24-S.pdf>
See store item page for other formats.