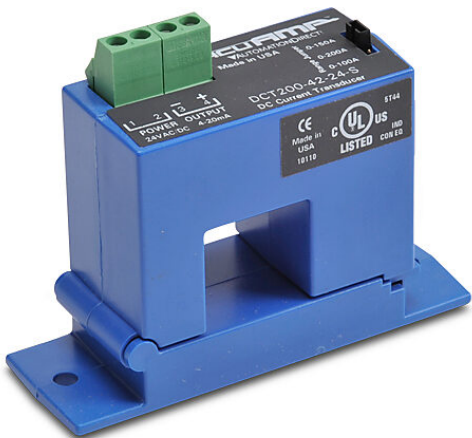


# DCT200-42-24-S Cut Sheet



AcuAMP DC current transducer, split core, 0-100, 0-150, or 0-200A selectable sensing range, 4-20 mA output.

For complete product information, please see this item on our store at the following link:



<https://www.automationdirect.com/pn/DCT200-42-24-S>

## Technical Specifications

Brand	AcuAMP
Item	Current transducer
Voltage Type	DC
Body Type	Split core
Sensing Range	0-100, 0-150, or 0-200A selectable
True RMS	No
Output	4-20 mA
Operating Voltage	24 VAC/VDC
Mounting	Panel or optional 35mm DIN rail
Electrical Connection	Screw terminals
UL Rating	UL 508 listed

## Agency Approvals

UL Listed File #	E222847
UL Recognized File #	None
UL Hazardous File #	None
CE	<a href="#">View CE declarations</a>
CSA File #	None
RoHS Status	Yes (See CE Doc)
EU REACH	<a href="#">View EU REACH document</a>

## Dimensional Drawings



2D Drawing PDF Link:  
<https://cdn.automationdirect.com/static/drawings/DCT200-42-24-S.pdf>  
See store item page for other formats.