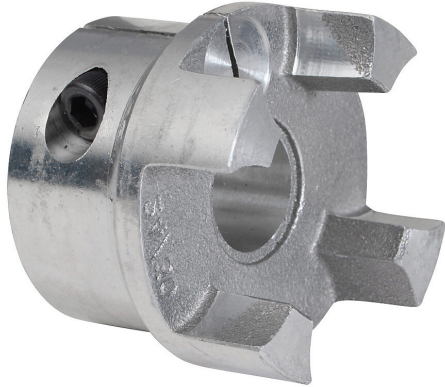


DC-JAC55-19M Cut Sheet



SureMotion drive coupling hub, jaw type, aluminum alloy, clamp, size 55, 19mm bore. Requires DC-JS55 series spiders.

For complete product information, please see this item on our store at the following link:



<https://www.automationdirect.com/pn/DC-JAC55-19M>

Technical Specifications

Brand	SureMotion
Item	Drive coupling hub
Coupling Type	Jaw type
Material	Aluminum alloy
Maximum Angular Misalignment	0.9 degrees
Maximum Parallel Misalignment	0.23mm
Maximum RPM	8480
Attachment Style	Clamp
Coupling Size	55
Bore Diameter	19mm
Outside Diameter	55mm
Requires	DC-JS55 series spiders

Agency Approvals

UL Listed File #	None
UL Recognized File #	None
UL Hazardous File #	None
CE	None
CSA File #	None
RoHS Status	No
EU REACH	View EU REACH document

Dimensional Drawings



2D Drawing PDF Link:
<https://cdn.automationdirect.com/static/drawings/DC-JAC55-19M.pdf>
See store item page for other formats.