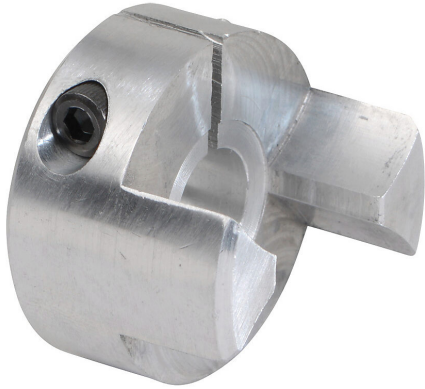


DC-JAC30-10M Cut Sheet



SureMotion drive coupling hub, jaw type, aluminum alloy, clamp, size 30, 10mm bore. Requires DC-JS30 series spiders.

For complete product information, please see this item on our store at the following link:



<https://www.automationdirect.com/pn/DC-JAC30-10M>

Technical Specifications

Brand	SureMotion
Item	Drive coupling hub
Coupling Type	Jaw type
Material	Aluminum alloy
Maximum Angular Misalignment	1.0 degrees
Maximum Parallel Misalignment	0.05mm
Maximum RPM	12720
Attachment Style	Clamp
Coupling Size	30
Bore Diameter	10mm
Outside Diameter	30mm
Requires	DC-JS30 series spiders

Agency Approvals

UL Listed File #	None
UL Recognized File #	None
UL Hazardous File #	None
CE	None
CSA File #	None
RoHS Status	No
EU REACH	View EU REACH document