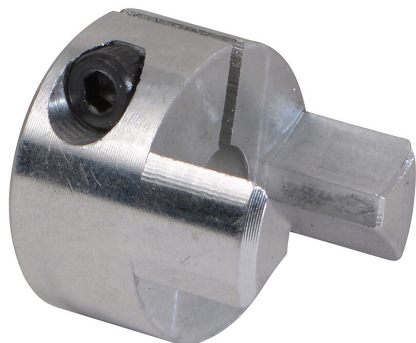


# DC-JAC20-04 Cut Sheet



SureMotion drive coupling hub, jaw type, aluminum alloy, clamp, size 20, 1/4in bore. Requires DC-JS20 series spiders.

For complete product information, please see this item on our store at the following link:



<https://www.automationdirect.com/pn/DC-JAC20-04>

## Technical Specifications

|                                      |                        |
|--------------------------------------|------------------------|
| <b>Brand</b>                         | SureMotion             |
| <b>Item</b>                          | Drive coupling hub     |
| <b>Coupling Type</b>                 | Jaw type               |
| <b>Material</b>                      | Aluminum alloy         |
| <b>Maximum Angular Misalignment</b>  | 1.0 degrees            |
| <b>Maximum Parallel Misalignment</b> | 0.05mm                 |
| <b>Maximum RPM</b>                   | 19040                  |
| <b>Attachment Style</b>              | Clamp                  |
| <b>Coupling Size</b>                 | 20                     |
| <b>Bore Diameter</b>                 | 1/4in                  |
| <b>Outside Diameter</b>              | 20mm                   |
| <b>Requires</b>                      | DC-JS20 series spiders |

## Agency Approvals

|                             |  |
|-----------------------------|--|
| <b>UL Listed File #</b>     | None                                   |
| <b>UL Recognized File #</b> | None                                   |
| <b>UL Hazardous File #</b>  | None                                   |
| <b>CE</b>                   | None                                   |
| <b>CSA File #</b>           | None                                   |
| <b>RoHS Status</b>          | No                                     |
| <b>EU REACH</b>             | <a href="#">View EU REACH document</a> |