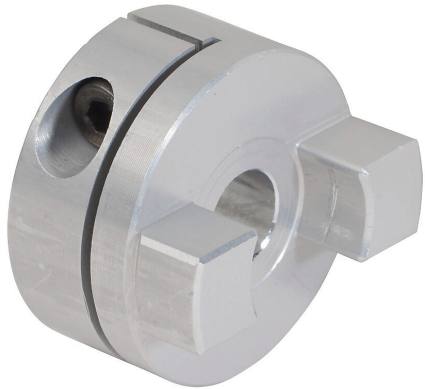


DC-DAC33-06 Cut Sheet



SureMotion drive coupling hub, Oldham, aluminum alloy, clamp, size 33, 3/8in bore. Requires DC-DDS33 torque disc.

For complete product information, please see this item on our store at the following link:



<https://www.automationdirect.com/pn/DC-DAC33-06>

Technical Specifications

Brand	SureMotion
Item	Drive coupling hub
Coupling Type	Oldham
Material	Aluminum alloy
Rated Torque	9 N-m
Maximum Angular Misalignment	3.0 degrees
Maximum Parallel Misalignment	0.41mm

Maximum RPM	3000
Attachment Style	Clamp
Coupling Size	33
Bore Diameter	3/8in
Outside Diameter	33.3mm
Requires	DC-DDS33 torque disc

Agency Approvals

UL Listed File #	None
UL Recognized File #	None
UL Hazardous File #	None
CE	None
CSA File #	None
RoHS Status	No
EU REACH	View EU REACH document

Dimensional Drawings



2D Drawing PDF Link:
<https://cdn.automationdirect.com/static/drawings/DC-DAC33-06.pdf>
See store item page for other formats.